

# 2015 European Energy Service Award

## Collaborative RE:FIT Project Across West London Councils

### West London Alliance Energy Managers Group



#### Description

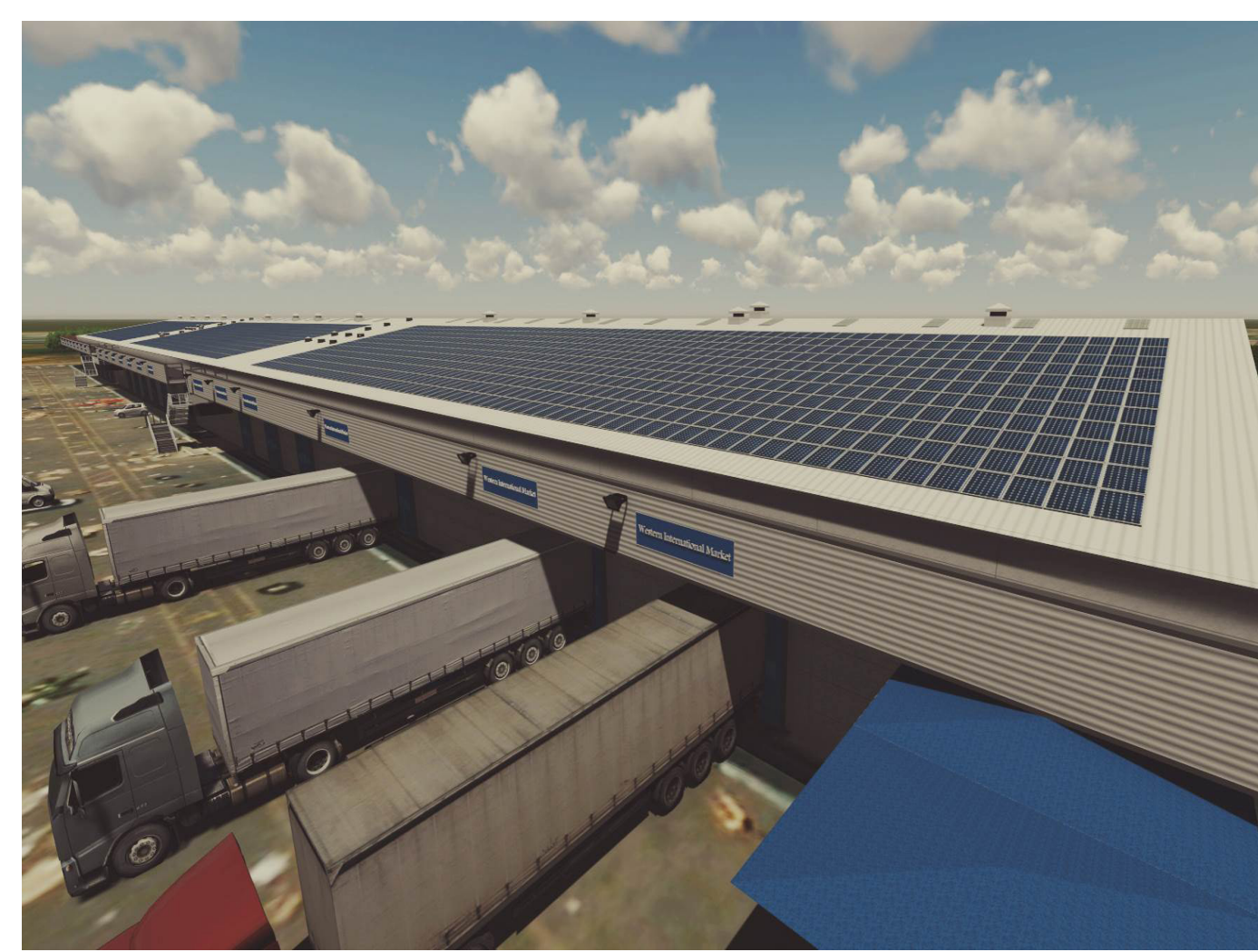
##### Background | Initial Situation

The West London Alliance (WLA) Energy Managers Group is a partnership of six West London council energy teams (Barnet, Brent, Ealing, Harrow, Hammersmith & Fulham and Hounslow). These teams are responsible for the energy and carbon management across the Councils and have come together to deliver energy efficiency savings across the sub region.

Identifying the potential to improve the energy performance of the buildings, the WLA councils signed up to the Greater London Authority's building retrofitting scheme - RE:FIT. This framework is available to all public sector organisations in the UK and streamlines the procurement process for energy services by providing pre-negotiated, EU-regulation-compliant contracts that can be used with a group of pre-qualified Energy Service Companies.

##### Solution | Measures

The WLA approach is different in that it is adopting a portfolio approach across multiple boroughs on a year on year basis using a single procurement competition with a shared project co-ordinator to deliver the projects.



#### Key Results

For an initial number of 21 buildings:

Invest	3,95 mio. €
Guaranteed energy savings	3.062 MWh/a
Reduction of CO <sub>2</sub> emissions	1.310 t/a
Saved energy costs	333.000 € (23,5 %)

The WLA boroughs have now delivered the first phase of their programme to install energy efficiency measures in properties and will continually roll out the project in order to deliver a steady stream of savings year on year thereafter.

The technologies include:

- » Lighting and controls upgrade
- » Loft insulation
- » Cavity wall insulation
- » BMS strategy and controls improvement
- » Solar photovoltaic
- » Energy storage
- » Boiler efficiency

#### Results

The benefits of this project extend beyond the energy efficiency of public buildings and include:

- » Continuity of work over a sustained period offered
- » One procurement for a number of boroughs is more cost effective than multiple repetitive procurements and companies do not have to repetitively expend time and cost by continually bidding for work, allowing us to develop a longer term partnership.
- » Having a co-ordinator, who is working through, on a continuous basis, a pipeline of buildings in a systematic fashion has improved the effectiveness and efficiency of the process and has allowed us to fit advanced technology measures in both larger and smaller buildings.

#### Contact

Tony Clarke

Phone +44 7525 | 89 34 62

E-Mail ClarkeT@ealing.gov.uk

[www.westlondonalliance.org.uk](http://www.westlondonalliance.org.uk)

[www.eesi2020.eu](http://www.eesi2020.eu)

